



30 (1.2')



11
(0.4')

adjustable
up to 3000
(10')
standard

adjustable
up to 30500
(100')
custom



150-191
(5.5'-7.5')

- PENDANTS: one
- MOUNTING: mini canopy 30mm (1.2') in diameter x 11mm (0.4') deep
- LAMPING: 1.5w LED (2000K, 2500K, 3500K)
- COAX: adjustable 3000mm (10') standard / up to 30500mm (100') maximum
- MATERIALS: blown glass, braided metal coaxial cable, electrical components, brushed nickel canopy
- WEIGHT: approximately 2.75kg (6.1lb)
- POWER SUPPLIES: remote mounted (fixture does not hook directly to a junction box). Power supplies included

DESCRIPTION

The 100.1m is a single 100 pendant fixture with a mini canopy size. The mini canopy is just over 30mm (1.2") in diameter and 11mm (0.4") deep, which creates a subtle profile that will essentially disappear into the application surface. The pendant drop lengths on this light fixture are adjustable up to the specified maximum.

100 brings multiple glass artists together in a performative act. Molten glass bubbles are prepared and then smashed together to produce unpredictable interlocking glass forms.

NOTES

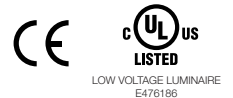
- + Purchase replacement lamps online at www.bocci.com/shop/bulbs
- + All chandeliers will be outfitted with 2500K lamps if not specified.
- + Requires power supplies to be remote mounted.

US Patent Pending
EU Patent # 008526131-0001

Made in Vancouver, Canada

Vancouver
sales@bocci.com
www.bocci.com

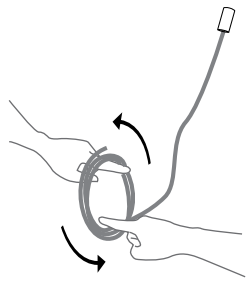
Berlin
europe@bocci.com
www.bocci.com



MINI CANOPY

100.1m

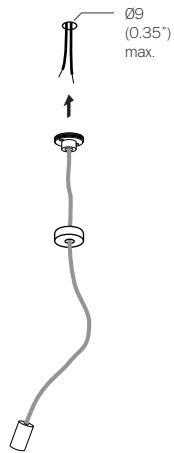
PRODUCT SPECIFICATION



1

Very carefully uncoil the braided coaxial cable in a spool like manner. Insert your index fingers into opposite sides of the roll then rotate your fingers around each other to unroll the coaxial cable.

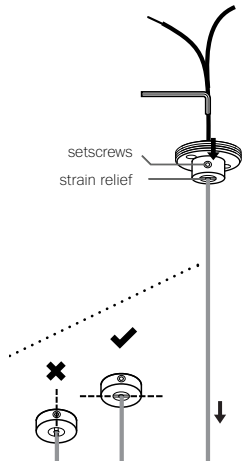
Use patience: allow the cable to uncoil completely to avoid kinks.



2

Drill a maximum 9mm (0.35") diameter hole in ceiling material. Pull low voltage house wire through the hole.

Note: There MUST be adequate backing, not just the drywall. This low voltage wire will run to a remote mounted power supply.



3

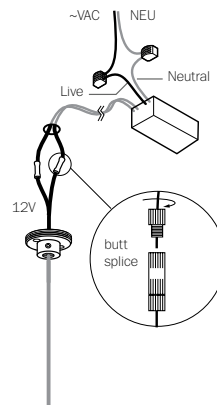
Thread the coaxial cable through the canopy, use a 2mm Allen key to loosen the setscrew in the canopy and gently feed the cable through until you have reached your desired drop length.

Use Allen key to tighten the setscrew to hold the strain relief and secure the coaxial cable at its new length. Perform a gentle tug test to ensure it is secure.

DO NOT OVERTIGHTEN.

Note: The strain relief is a black plastic collar around the coaxial cable. There is a single slot opening on the side of the strain relief component. It is essential that this opening is oriented at 90 degrees to set screw chamber. There can be no contact between the set screw and the cable.

RISK OF ELECTRIC SHORT!



4

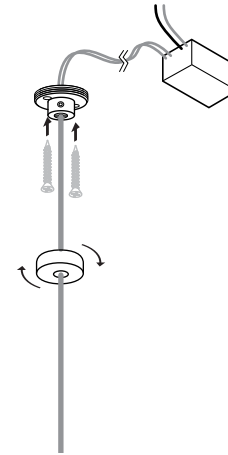
Primary: connect live and neutral power supply leads to supply wiring. Line with Live wire and Neutral with Neutral.

Secondary: Connect (+/-) wires to the coaxial cable using #16 butt splices, provided (stagger the splices).

For multiple pendant installations, ensure that the braided outer wires are all connected to one 12V output wire and all inner insulated wires are connected to the other or a short will occur.

Wires are 1.02mm (18AWG).

Note: Insulated core is positive and braided exterior is negative.

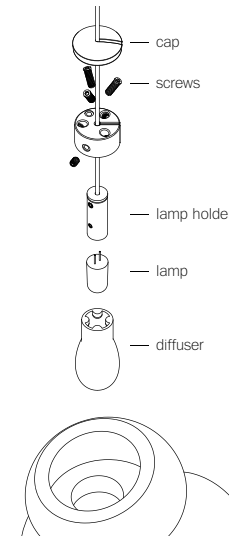


5

The client is responsible to ensure fasteners are attached to a robust structural substrate.

Affix mini-canopy to ceiling surface with fasteners provided. Twist the threaded cover into place.

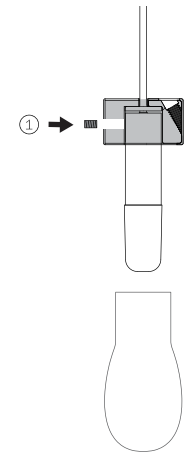
Turn power to fixture on.



6

Please note that the crisp cut edges of the 100 pendants are fragile and can chip if not handled with care when installing and cleaning.

Bocci recommends wearing gloves during the installation. The edges of the glass may be sharp to handle.



7

Step 1: Attach the lamp holder to the pendant hardware with set screw provided.

Plug the lamp into lamp holder and slide on the diffuser. Do not touch the lamp with your bare hands. Ensure power to lamp is working correctly.

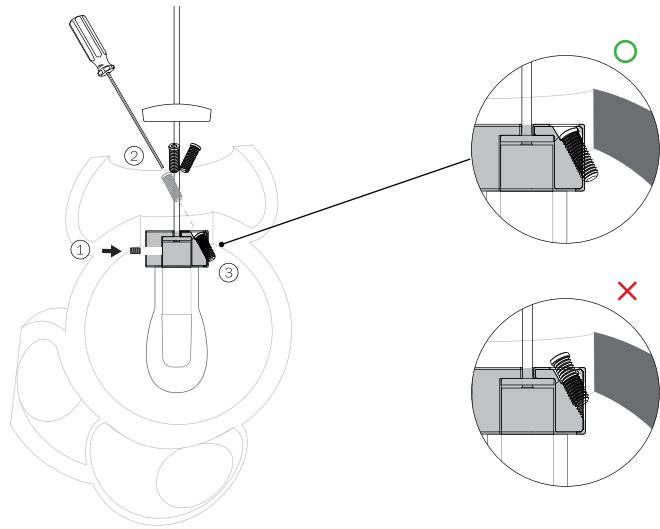
MINI CANOPY

100.1m

PRODUCT INSTALLATION INSTRUCTIONS

© 2021, Bocci Design and Manufacturing Inc. All rights reserved. Any inquiries should be directed to: info@bocci.com

BOCCI



8

Step 2: Insert the pendant hardware assembly into the pendant.

Step 3: Tighten the 3 screws until they are fully engaged (refer to illustration above).

9

Give the pendant a gentle pull to ensure the screws are locked onto the pendant.

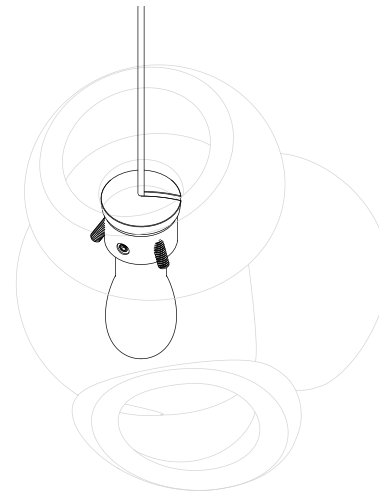
Slide cover cap onto the coaxial cable and place into the inset portion of the pendant hardware.

10

The cap should sit flat on the pendant hardware.

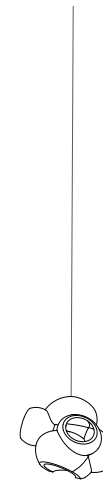
If the screws are sticking out and the cap isn't sitting flat on the pendant hardware, please check to ensure the screws are fully engaged.

Refer to step 8 & 9 for more details.



11

Clean fingerprints from surfaces.



For additional assistance,
please contact Bocci:

Vancouver
sales@bocci.com
www.bocci.com

Berlin
europe@bocci.com
www.bocci.com

US Patent Pending
EU Patent # 008526131-0001

Made in Vancouver, Canada



LOW VOLTAGE LUMINAIRE
E476186

MINI CANOPY

100.1m

PRODUCT INSTALLATION INSTRUCTIONS

© 2021, Bocci Design and Manufacturing Inc. All rights reserved. Any inquiries should be directed to: info@bocci.com

BOCCI